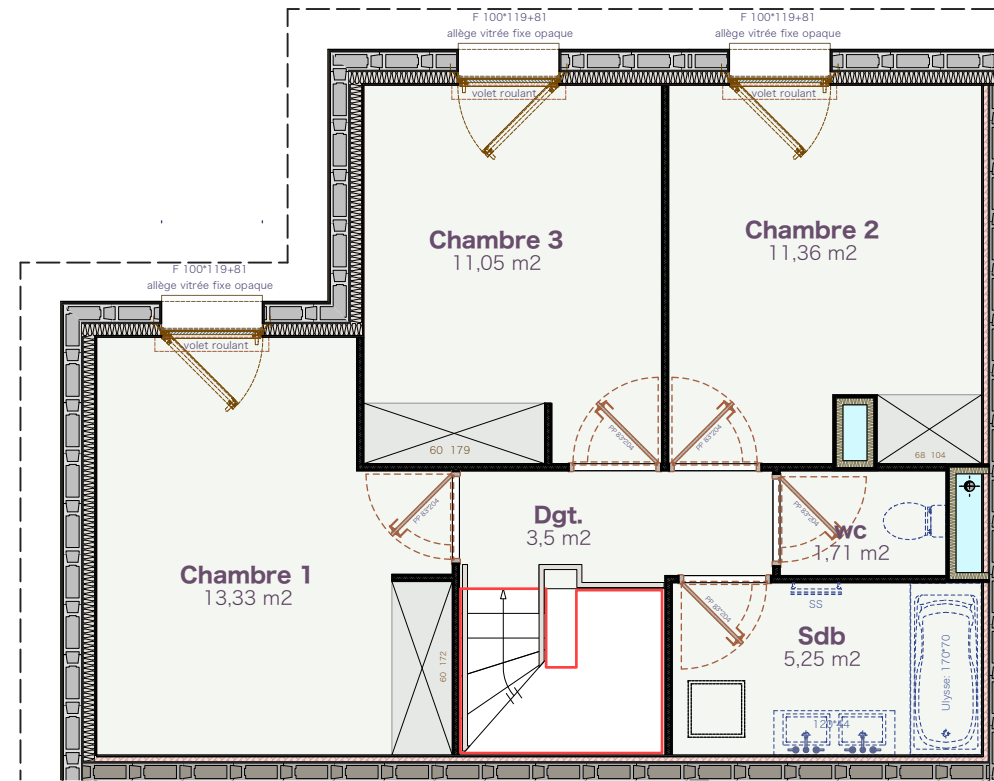




PLAN. ETAGE

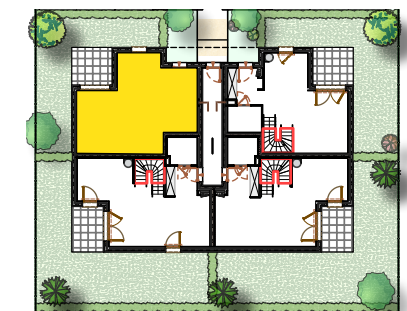
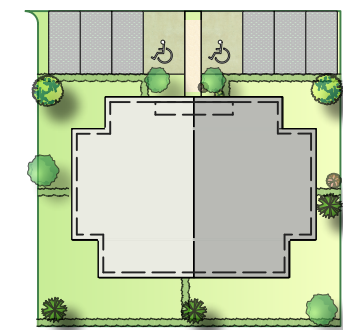


PLAN. RDC



Bât. D

Type T4



TOTAL SHAB 82,75 m²

Pièce de vie	32,64 m²
Toil.	3,92 m²
Chambre 1	13,33 m²
Chambre 2	11,36 m²
Chambre 3	11,05 m²
Sdb	5,25 m²
Dgt.	3,50 m²
wc	1,71 m²
Terrasse	7,05 m²
Jardin	45,40 m²

jeudi 2 avril 2026