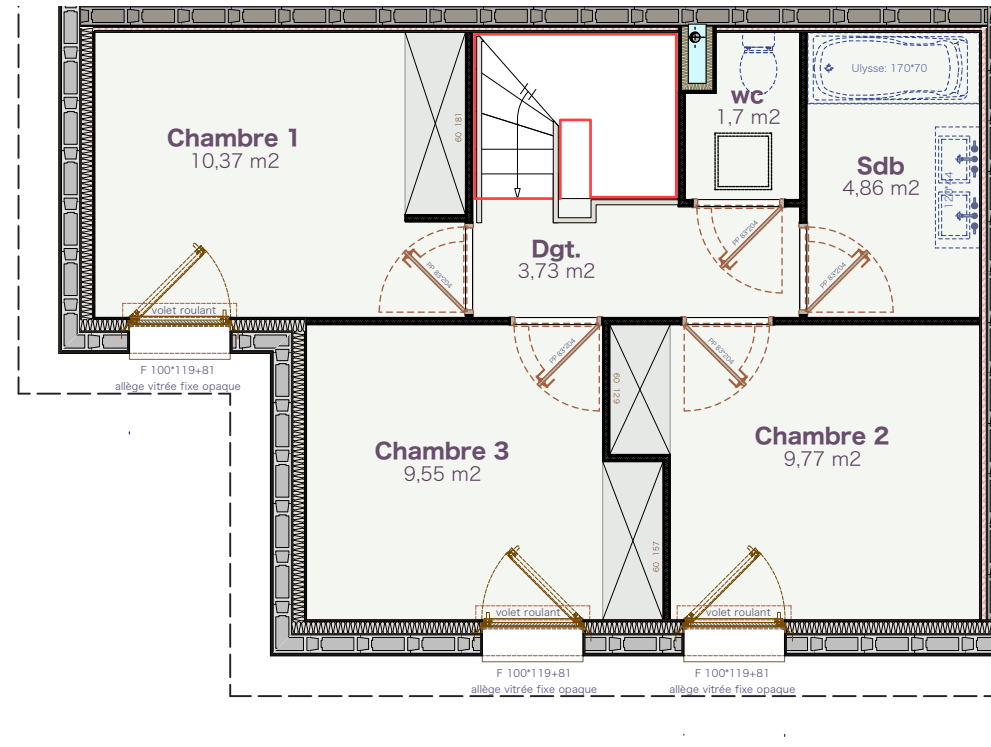




PLAN. ETAGE

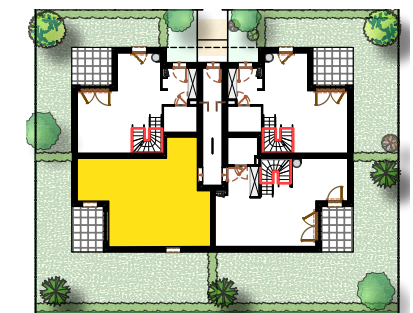
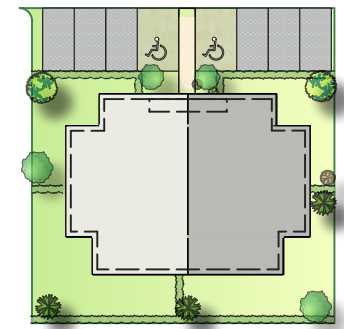


PLAN. RDC



Bât. D

Type T4



TOTAL SHAB 82,04 m²

Pièce de vie	38,57 m²
Toil.	3,49 m²
Chambre 1	10,37 m²
Chambre 2	9,77 m²
Chambre 3	9,55 m²
Sdb	4,86 m²
Dgt.	3,73 m²
wc	1,70 m²
Terrasse	6,95 m²
Jardin	61,92 m²

jeudi 2 avril 2026